

# 110-0403 Cam Lock



**With Finger Pull**



**Non-locking Thumb Turn and  
7mm Square Tool Operated Drives**

Designed as a simple companion for TriMark's locking solutions, these 1/4 turn cam locks feature KeyOne™ Plus keying, multiple body lengths and a variety of cam options to provide application flexibility.

**DESIGNED FOR:**

- Storage, baggage, compartment and access doors for on and off-highway vehicle applications

**AVAILABLE:**

- In two body lengths for door thicknesses. Up to .400" (10.2mm) for the .83" (21mm) escutcheon depth and up to .600" (15.2mm) for the .98" (24.9mm) escutcheon depth
- With a variety of cam options including straight as well as offset versions (please inquire)
- Lock can be keyed to match other TriMark door products with KeyOne™ Plus for a single-key system
- Optional steel finger pull provides additional functionality
- Standard cam rotation is 90 degrees and can be configured CW and CCW rotation with cam alignment at 90 degree increments (180 degree rotation is also available)
- Non-locking thumb turn and 7mm square tool operated drives are available in sturdy die cast zinc alloy with either low gloss black and chrome finish. Operation is smooth with detent rotation in latched and unlatched position. Other tool drives are available upon request.



**TriMark Corporation**  
500 Bailey Avenue  
P.O. Box 350  
New Hampton, Iowa 50659  
United States  
Tel: 641-394-3188  
Fax: 641-394-2392  
1-800-447-0343  
www.trimarkcorp.com



**TriMark Europe**  
Cedar Court  
Walker Road  
Bardon Hill  
Coalville LE67 1TU  
United Kingdom  
Tel: +44(0)1530 512460  
Fax: +44(0)1530 512461  
www.trimarkeu.com



**MATERIAL:**

- Escutcheon: Die cast zinc alloy
- Mounting nut, lock stop and cams: Mild steel

**FINISH:**

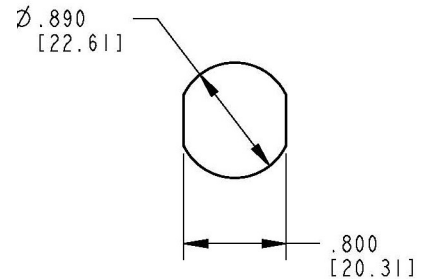
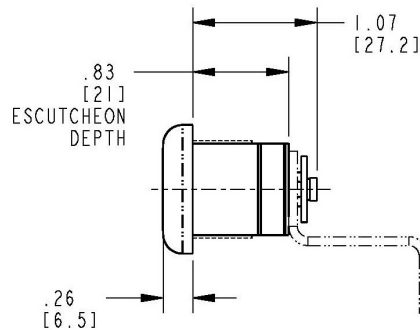
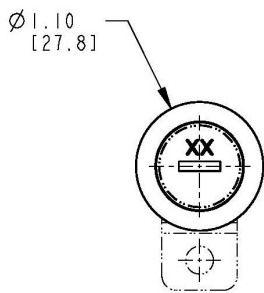
- Zinc plate, clear chromate conversion coat on all steel and zinc components

**INSTALLATION**

- Cam lock assembly comes with mounting nut and cam mount screw
- 1 inch (25.4mm) panel nut to secure cam lock to the door

Individual part dimensions are for reference only. Refer to individual part drawings for complete dimensions, specifications, and installation procedures. Engineering assistance and application drawings are available.

For more information visit  
[www.trimarkcorp.com](http://www.trimarkcorp.com)



**RECOMMENDED CUTOUT**

